

EFC REGIONAL ASSEMBLY REGULATIONS

Last Amended by 3rd Executive Board Meeting of 25th in 2009

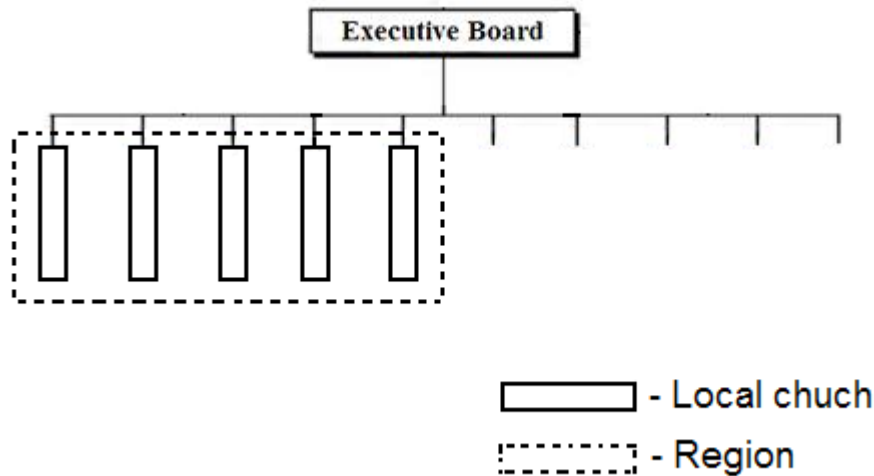
Notification : EFCGA Official Letter 08-121

- I. Purpose : To effectively achieve the Great Mission commended by our Lord through the EFC Regional Assembly's full cooperation, joint planning, resource sharing and mutual encouragement.
- II. Responsibilities:
 1. To develop and execute the goals and strategies of the regional mission work.
 2. To seek co-workers, train co-workers and delegate co-workers to spread gospel and plant churches with a team spirit.
 3. To coordinate the regional mission activities.
 4. To plan regional revival, evangelic, and training meetings.
 5. To establish a good relationship in regional resource sharing and mobilization.
 6. To prepare and audit the Regional Assembly's annual budget and financial report.
 7. To raise fund for the Regional Assembly's budget plan.
 8. To review and improve the Regional Assembly's function.
- III. Organization:
 1. The Regional Assembly consist of " ex officio" members and "selected" members.
 - A. "Ex Officio" members: Referring to the regional churches' Senior Pastors (in the absence of a senior pastor, the pastor or minister in charge of the church may represent the church), Chairpersons of the Church Councils (or the Chairpersons of the Co-Workers Committee) and the EFCGA's Board Directors residing in the subject Region. The terms of these members end with the terms of their respective positions in their local churches or the EFCGA.
 - B. "Selected" members: In order to maintain the stability and continuity of the operation of a Regional Assembly, the Regional Assembly should select 3 to 5 senior elders or deacons from their regional churches to be their members. It is preferred that these selected members are not the incumbent elders or deacons of the regional churches. These selected members should have served as an elder or deacon at least one term in one of the EFC local churches and they are still faithfully and enthusiastically serving the churches. Those with gifts of spiritual leadership should be considered for nomination first. The term of these members is two (2) years, they can be re-selected twice.
 - C. The regional churches do not include the gospel stations, however, the gospel stations are welcome to send representatives to the Regional Assembly meeting as observers.
 - D. The Regional Assemblies should complete the processes of determining their new year's constituting members and report them to the EFCGA by December 10 of each year.
 2. The Regional Assembly should establish the five basic positions of Regional Pastor-in-Charge, Regional Chairperson, Regional Secretary, Regional Treasurer and Regional MissionDirector. Other positions can be established as needed.
 - A. Regional Pastor-in-Charge : To be elected from the regional churches' Senior Pastors. In the absence of the senior pastor, the EFCGA in coordinating with the Regional Assembly will assign an appropriate pastor or minister to hold the position. The term is one (1) year, he/she can be re-elected. The Pastor-in-Charge is responsible for leading the regional pastoral work and mission activities. The Pastor-in-Charge is also the Ex Officio Chairperson of the Regional Ministerial Association.
 - B. Regional Chairperson : To be elected from the "layman"members. The term is one (1) year,he/she can be re-elected. The Chairperson is responsible for calling the Regional Assembly meetings, coordinating the administrative work, conducting Regional Assembly meetings and promoting the Regional mission ministry with the Regional Pastor-in-Charge.
 - C. Regional Secretary : To be elected from the "layman" members. The term is one (1) year,he/she can be re-elected. The Secretary is responsible for taking the minutes of the Regional meeting, the safekeeping and dealing of the Regional business documents. In the absence of the Chairperson, he/she substitutes the Chairperson in conducting the Regional meeting.
 - D. Regional Treasurer : To be elected from the "layman" members. The term is one (1) year, he/she can be re-elected. The Treasurer is responsible for managing the Regional budget and financial matters.

EFC REGIONAL ASSEMBLY REGULATIONS

- E. Regional Mission Director : To be elected from the "clergyman" or the "layman" members. The term is one (1) year, he/she can be re-elected. The Mission Director is responsible for carrying out the mission projects approved by the Regional Assembly meetings.

3. The basic organizational structure of the Regional Assembly



4. Meeting : The Regional Assembly Meeting should be held at least twice a year (The meeting can be conducted by "telephone conference" to minimize the expenses). The meeting should be called by the Regional Chairperson in coordination with the Regional Pastor-in-Charge.

IV. Region Structuring:

1. Central Region of Southern California
2. East Region of Southern California
3. Southwest Region of Southern California
4. US Central Region
5. US East Region
6. US South Region
7. New Zealand Region
8. Australia Region
9. North Taiwan Region (including the area north to Tzou Shui River and the Hua Lien area)
10. South Taiwan Region (including the area south to Tzou Shui River and the Tai Tung area)

V. Enactments and Amendments of Regional Assembly's Rules and Regulations:

1. Any rules or regulations enacted by the Regional Assembly in conflict with the EFCGA's Constitution, Bylaws, Rules or Regulations will be considered invalid.
2. The Regional Assembly may enact their own enforcement details for this Regional Assembly Regulations to accommodate their regional specific needs and characteristics. However, the regionally enacted enforcement details must be approved by the EFCGA's Executive Board for their validity.
3. Any amendments of the Regional Assembly's enforcement details must be approved by the EFCGA's Executive Board for their validity.

VI. This Regional Assembly Regulations is enacted and approved by the EFCGA's Executive Board for enforcement. Any amendments of this Regulations should be done likewise.